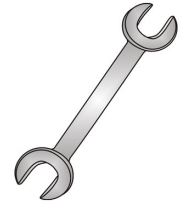




Tow-Trust Towbars

Important: Please read General Notes overleaf before fitting



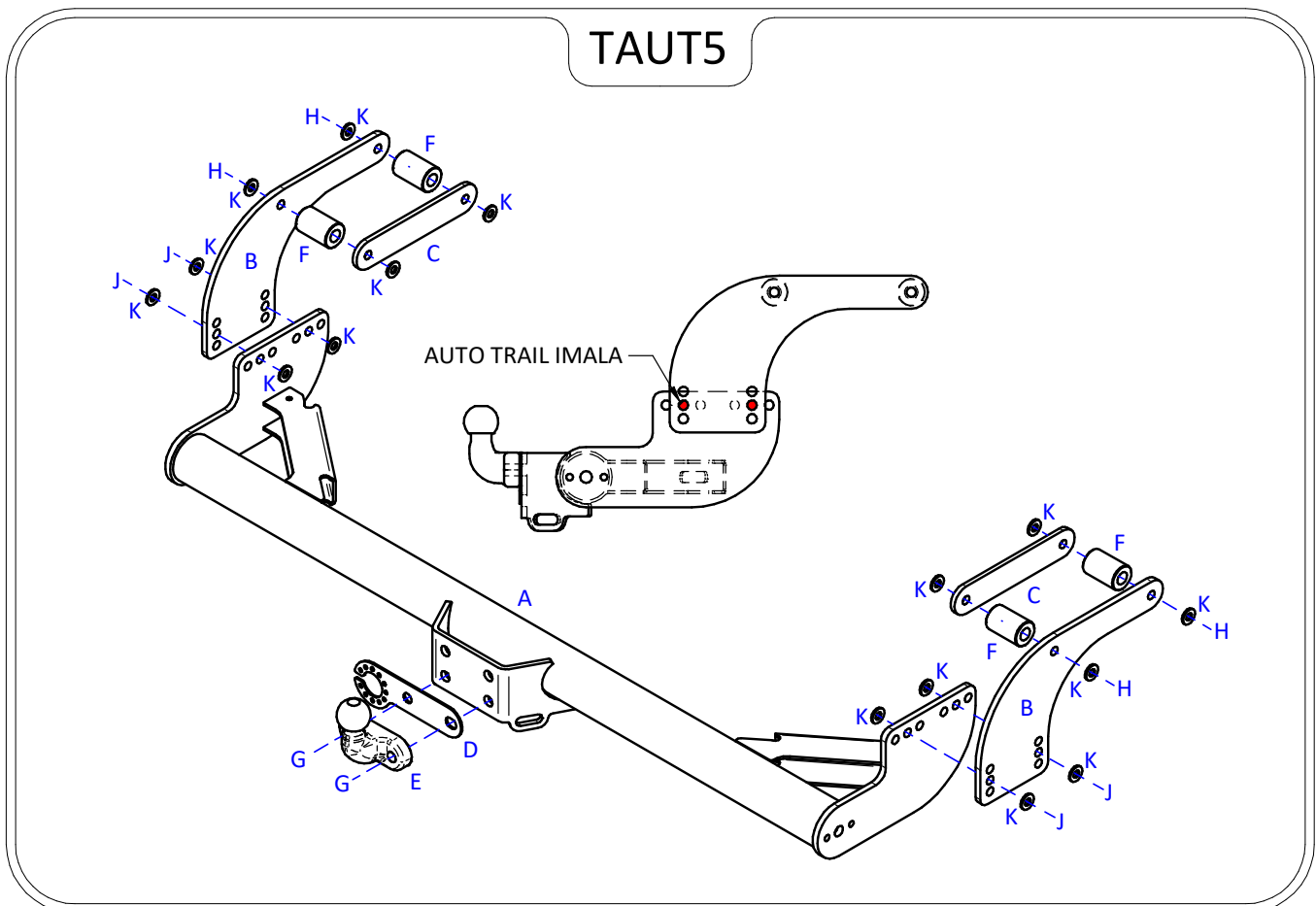
Issue 3

TAUT5 AUTO TRAIL IMALA

Item	Qty	Description	Item	Qty	Description
A	1	TAUT5 Crossmember	G	2	M16 x 50 Bolts & Nyloc Nuts
B	2	Side Arms	H	4	M12 x 110 Bolts Grade 10.9 & Nyloc Nuts
C	2	Clamp Plates	J	4	M12 x 45 Bolts Grade 10.9 & Nyloc Nuts
D	1	Single Socket Plate 5	K	16	12 x 25 Flat Washers
E	1	ATT-T1 Towball & Towball Cap			
F	4	40mm O/D x 62mm Long Tubes			

TOWBAR INSTALLATION:

- Using Item H with Item K fit Items B to the outside face of each chassis extension ensuring Item F is fitted between the extension and Item C is used as a clamp plate on the inside face.
- Using Item J with Item K fix Item A between each side arm.
- Using Item G bolt the ball bracket and wiring plate to the face plate.
- Fully tighten all nuts and bolts ensuring the Towbar is rigid, square, and secure.
- Fit vehicle specific wiring kit as per the separate instruction.



Note:

- Recommended Torque Setting for M12 Grade 10.9 -130 Nm. (For other Torque Settings see notes overleaf.)
- Nose load limits and vehicle manufacturers trailer / caravan weight limits must be observed.